



connected

SPRING / SUMMER 2021



The Power of Community

#TogetherAtHome
raises vital funds
page 4

A Commitment to Care Campaign

Focusing support where
it's needed most
page 7

WELCOME

Welcome! You have given us so much to be thankful for, and we are excited to share the stories and highlights of the past few months. Thank you for your generosity throughout a most challenging year, for your ongoing support of the work of CLH Developmental Support Services and the individuals we serve, and for demonstrating so clearly that you too believe in the power and value of support, inclusion and empowerment.



MESSAGE FROM THE PRESIDENT

Since the last edition of *Connected*, we have all certainly had our share of continuing challenges. But as we have emerged from the dark days of winter and straight into the sunshine of spring, we have also had the most wonderful show of support: an unparalleled outpouring of community generosity for CLH.

Thanks to you, our annual *A Red Carpet Evening* gala was an outstanding and unprecedented success. Your generosity netted more than \$96,000 to support the work of CLH Developmental Support Services – and we cannot adequately express our gratitude. We were astonished by the transformative leadership gifts and donations that came as a result of our virtual gala; these will have impact far beyond what anyone could have imagined.

In these pages, you will see story after story of the diverse and compassionate donor and community support that has made all these days at home for supported individuals so much better, and will help us to continue to provide for essential needs as well as enriched opportunities for those served by CLH.

Recently, we have seen wonderful support and generosity from the Rotary Club of Midland, Huronia Community Foundation, and Raytheon ELCAN. Each of these gifts will directly impact

the people who are served by CLH in a variety of programming; each gift will undoubtedly help us reach our goal of providing opportunities for each supported individual to thrive in ways best suited to them. CLH Foundation is thrilled to be the most recent selected charity of Gbay Gals Give – thanks to the gifts of these generous “Gals”, our *Commitment to Care* campaign is off to a winning start.

You have given to us in so many ways, and with so much uncertainty in our lives today, this is something I can say for certain: your gifts will continue to support, include and empower each person who is touched by your generosity. But make no mistake – for all this good work, our work is not yet done. CLH still requires your support to ensure the impact of these important programs and initiatives can continue. It is my sincere hope that CLH Foundation will be able to count on you as a valued partner, and that what you see in this edition of *Connected* brings a smile to your face as you see your generosity in action.

Thank you to each and every one of you for your continued support – you are making a vital difference to the entire CLH community.

A handwritten signature in black ink, appearing to read 'Sarah Kitchen'.

Sarah Kitchen
President
CLH Foundation Board of Directors



COMMITTED TO PROVIDING ABOVE AND BEYOND SUPPORT

Throughout the last year, the pandemic has stretched and challenged CLH Developmental Support Services and the individuals we serve in many ways. Those challenges have been met at every turn by a supportive community – and for that I could not be more grateful. It has also highlighted an area where meaningful support is needed: covering the cost of critical but not fully funded medical supplies for individuals in our care, at no cost to those who need them.

CLH stands firm in this commitment; it is a practice that has been in place here from the beginning – but has become increasingly more difficult to maintain.

Many basic needs are not fully covered or considered through traditional government models of support, funding, or benefits – even though they may be essential to managing various medical conditions. Over-the-counter and certain prescription medications, vitamin supplements, meal replacements, personal hygiene products and incontinence supplies, as well as other items crucial to the well-being of supported individuals are not always fully covered. These are expenses most cannot afford, but would nonetheless be expected to cover.

CLH spends approximately \$120,000 annually to provide these “above and beyond” supports, and is committed to finding ways to continue this practice. Ninety adults reside full-time in CLH Supported Living Homes – many of whom have complex medical needs. The newest CLH Foundation *Commitment to Care* initiative will ensure that each supported individual has what they need to remain healthy and well. Ensuring this high standard of care, support, and quality of life continues with no additional financial burden to the individuals we support is one of our highest priorities.

Your support of the *Commitment to Care* campaign will not only benefit CLH-supported individuals with practical and much-needed medical supplies but also help maintain their personal dignity, well-being and continued opportunities to thrive.

On behalf of everyone at CLH, thank you for your generosity.

A handwritten signature in black ink, appearing to read 'D. Johnson'.

Dean Johnson
Chief Executive Officer
CLH Developmental Support Services



THE POWER OF COMMUNITY

The #TogetherAtHome Edition of *A Red Carpet Evening* on February 20 demonstrated the power of community with outstanding results!

Presented by leading sponsor Scotiabank, and led by a leadership donation of \$15,000 from The Weber Foundation, we spent an evening “together” as we have for so many years, enjoying our annual *A Red Carpet Evening* gala – in a new virtual format, but with the same passion and purpose as ever. More than **\$96,000** in critical funds were raised to support CLH Developmental Support Services.

The presentation was highlighted by an amazing performance by The Trews Trio. In addition to the

one-hour broadcast led by KC Colby, our pre-show was hosted by Scott Warnock, with entertainment provided by Kitty and the Boyz Unplugged 3.0.

Our online Silent Auction showcased the best of our local and regional artisans and businesses, highlighting the generosity and talent in our own backyard – and raising significant funds for CLH. Adding to the festivities and the funds raised, the Bourgeois Nissan VIP Shuttle Team delivered tasty VIP Charcuterie packages to gala households across North Simcoe.

Our sincere thanks to the many sponsors, donors, partners, and volunteers who made the 2021 edition of *A Red Carpet Evening* one to remember!



“We admire your work in the community and know that your organization goes above and beyond to provide many positive programs and opportunities for those served by CLH.”

– REINHART WEBER, #TogetherAtHome LEADERSHIP DONOR



#TOGETHERATHOME SPONSORS

Scotiabank

Presenting Sponsor



Platinum Sponsor

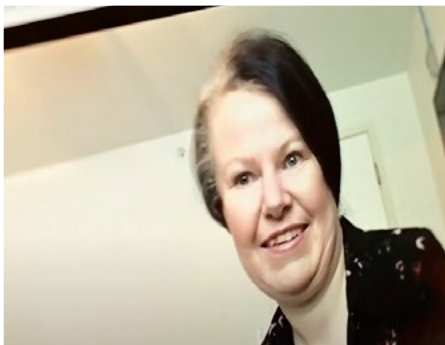


Auction Sponsors

A Passion for Fashion Inc. | Art in Bloem | Backwood Design Co. | Bamboo Spa | Belle Décor | Blair Interiors | Bourgeois Motors Ford
 Café Kittyhawk | Casamigos | Cellarman's Ale House | Chrissy Robertson, Norwex | CLH Foundation Board and CLH Gala Committee
 CLH HR Team Members | CNCC | Crock-a-Doodle, Midland | Dillon's Wood Fired Pizza | FDT Law • Jennifer Goldsmith | Flynn's Irish Pub
 Fresh by Leanne | Gayle Thompson, Gayle's Stained Glass | Georgian Bay Books | Georgian Grace Photography
 Good Vibes Yoga Collective | Ice Art | Kerry Dupuis, Regional Vice-President, Primerica | Lamb + Kiss | Lilly's Italian Eatery
 Lynne's Clean Beauty | MadCor Liquidations | Midland Furniture | Mind's Alive, Midland | Nicole Percival, RMT | Norman's Garden Gallery
 One Stop Beauty Shop | Rogers | Sandra Robitaille, Zya Activewear Consultant | Shoppers Drug Mart, Midland | Silver Bridge Vapes
 Sue Kerslake | Sue-Ellen Boyes and Jeff Schreiter | Suzanne Charlebois | The Arch Steakhouse | The Explorers Café | The Pebble Tree
 The Queen's Quay British Pub | Tim Hortons • Hwy. 93

#TogetherAtHome Team

K.C. Colby | The Trews Trio | Scott Warnock | Kitty and The Boz Unplugged 3.0 | Norma Johnston | Amanda McKinnon | Cora Eisenfeller
 Sharon Post | Deb Duval | Kevin Cascagnette | Wendy Mullin | Justin Neilon | Dave Sibley | Multi-Tech Audio Visual • Karen Zinn
 Givergy Team • Hannah + Basel | APA Agency • Lorraine Webb | North Simcoe Signs | Scotiabank Midland + Penetanguishene Volunteers
 Dock Lunch | Pier 21 | Feast Catering | Bourgeois Nissan • VIP Shuttle Team | Deluxe | Midland Copy Shoppe | Mary Irvine | Shawn Blake
 Pete Quesnelle | Dean Johnson | Sarah Kitchen



SIL UPDATE: BRIDGING THE GAP



The CLH Foundation *Bridging the Gap* initiative was created last year to provide equal access to items and opportunities necessary to good health and well-being for those in our Supported Independent Living (SIL) program, individuals who live on their own with support from CLH direct support professionals. CLH Foundation is committed to continue to “Bridge the Gap” with resources to help ensure the well-being of all 33 members of our SIL community – through the pandemic and beyond.

Winter-Ready Gear

As winter set in, CLH Foundation began to think of ways to provide meaningful support for the members of our Supported Independent Living program, who continue to be greatly impacted by the constraints of pandemic measures and the challenges of a very limited income. With generous funding from the Federal Emergency Community Support Fund and Huronia Community Foundation, members of our SIL program were able to get “Winter-Ready” with much-needed (and brand new) warm coats, boots, hats, mitts and scarves. Staying active outdoors and connected to the community is an important part of mental as well as physical health; being winter-ready also means being work-ready, able to work outdoors, or comfortably wait at the bus stop to get to work.

Spring Pantry Stock Up

Like many on a fixed income, SIL members struggle to make ends meet; many receive a modest monthly disability pension that has to cover all living costs: rent, telephone, laundry, food, clothing, and all additional living expenses. With the average monthly rent in North Simcoe now sitting at \$1200, it is a significant challenge to get through each month on their income – and many don’t. The rising cost of groceries makes the purchase of staples, cleaning, and household supplies an ever-greater challenge.

Recognizing the ongoing needs of SIL members, and inspired by the impact of last year’s SIL care hampers donated by the Midland Rotary Club, in mid-April CLH Foundation ensured that every member of the SIL program received a \$50 grocery gift card for use at Food Basics in Midland. This was a meaningful way to assist our SIL members with a few additional basics and staples that are so critically needed – providing stability and security in a time of great change.



THE COMMITMENT TO CARE CAMPAIGN

Focusing Support Where It's Needed Most

This year, CLH Foundation's fundraising efforts will help ensure that individuals who live in CLH Supported Living Homes will continue to fully access the unfunded medical supplies and essential items they need to thrive and to remain healthy and well. Covering these unfunded expenses has always been the practice of CLH, a tradition and level of care that is unique to CLH. The financial challenges of the past year have drawn attention to the need for CLH Developmental Support Services to find other ways to continue to cover these costs without placing any financial burden on the individuals themselves. CLH Foundation's *Commitment to Care* campaign will help meet that need.

You might be surprised – as we were! – to learn that many basic medical needs are not covered or even considered through traditional government models of support, even though most supported individuals live on a very fixed income. This means that over-the-counter medication and preparations, vitamins, meal replacements, hygiene products and other supplies are simply not covered. Significant costs such as these would be difficult for anyone, and without the help of CLH, it is uncertain how the 90 adults in our Supported Living Homes, many of whom have complex medical needs, would be able pay those costs.

For example, one CLH-supported individual requires specialized feeding-tube food that costs more than \$700 monthly. He has no ability to pay for this, so CLH covers these costs month after month, year after year – and with this support this gentleman has thrived. Another individual was suffering seizures when he came to CLH, with very limited ability to express himself. CLH pays for his unfunded (but crucial) medication, and it has had the most wonderful impact: his seizures have decreased, and he is able to speak very well. Without the assistance



The GBay Gals Give chose CLH Foundation and the *Commitment to Care* campaign as the recipient of their spring 2021 donations: this remarkable group of women collectively donated \$36,200, giving a tremendous kick-start to our campaign. Thank you to each and every "Gal"! Board President Sarah Kitchen gratefully accepted the donation on behalf of CLH Foundation.

of CLH, the cost of the prescription – at \$800 monthly – would be an insurmountable barrier to this transformative treatment.

Your generous support of *Commitment to Care* and CLH Foundation will ensure that success stories like these can continue to be a reality – and that those who need our help can continue to count on us. To learn more, make a donation, or become a monthly donor, visit www.clhfoundation.ca



To learn more or donate towards this campaign, visit www.CLHFoundation.ca

TD Supports Foundation for Success



“We are proud to collaborate with CLH Foundation and provide funds that support the Foundation for Success program. Creating opportunities and giving back to the communities where we live and work is a huge part of our culture at TD. While COVID-19 has affected us all, we know that some people are more impacted than others. That is why supporting programs that will help build resiliency and promote recovery is so important to us. It’s wonderful to see CLH Foundation stepping up to support people in our communities during these challenging times.”

– Jackie Stott, Branch Manager, TD Bank, Midland

As a founding sponsor of *A Red Carpet Evening*, TD Bank has been a strong supporter of CLH Foundation for many years. This year, TD is directing that support to boost *Foundation for Success*, the CLH Foundation program which provides funding support to CLH-supported individuals who need additional financial help to access specialized services, medical equipment or learning tools that will help them thrive, but aren’t covered by any other funding.

TD is committed to supporting community programs that help people who are vulnerable to loneliness and

social isolation to build meaningful connections in their local community, *Foundation for Success* provides critical support to individuals in four key areas: community and social inclusion; personal development and skill building; health and assistive devices; and essential needs. It fills in where the need is great but other sources of support are not available to the individual.

On behalf of those who will benefit directly from this program, thank you TD!

Opportunity to Join CLH Foundation Board of Directors

CLH Foundation engages in community-driven fundraising initiatives to support CLH Developmental Support Services. The Board of Directors of CLH Foundation is responsible to oversee fundraising activities, operational budgets and fundraising targets, strategize for increased fundraising and community engagement opportunities, as well as monitoring the progress and direction of CLH Foundation.

Directors bring personal skills and experience in such areas as fundraising, public foundation management, governance, finance and accounting, law, communications, strategic planning, revenue development or community networking to CLH Foundation.

If you feel you would be a valuable asset to our Board of Directors, please email clh.foundation@clhmidland.on.ca to express your interest!

RAYTHEON ELCAN RAISES THE FLAG FOR CLH



Each year, April 2 marks World Autism Awareness Day, a day not only to #RaiseTheFlag to create greater awareness and acceptance of Autism, but also help build a kinder, more inclusive world.

This year to mark this special day, Raytheon ELCAN in Midland made a \$1000 donation on behalf of their employees to help children and families served by CLH's Simcoe County Resource Consultation Services at Base Borden.

"Over the last year, we all have learned the importance of connections," according to Katharine Rowe-Bailey, General Manager at Raytheon ELCAN in Midland. "This is especially true for children with special needs. The employees at Raytheon ELCAN invite you to support Autism awareness and support individuals in our community."

Thank you to the Raytheon ELCAN community!

MIDLAND ROTARY HELPS US GROW!

The Greenhouse at Olive is springing to life! We've been looking forward to this since the fall of 2019, when TAY Men Give and a CLH parent made generous project donations to seed the project.

With all building approvals now in place, the Greenhouse is soon going to be ready for use.

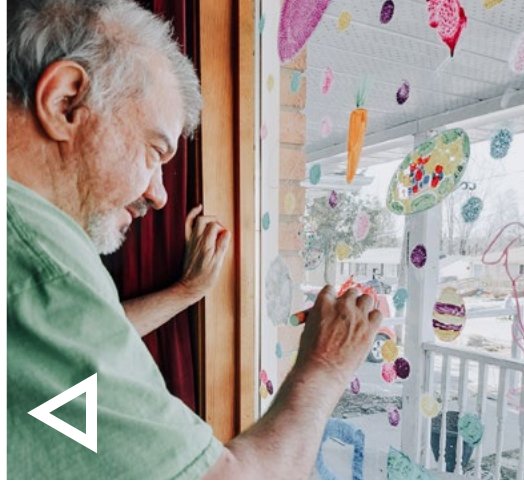
The project has received another wonderful boost, thanks to a generous \$2500 springtime donation from Rotary Club of Midland. With their help we will be able to purchase the equipment and materials

required to create a successful base for getting growing!

The Greenhouse at Olive will be hands-on space for skill-building, teaching the benefits of gardening and the joy of nurturing a plant from seed to harvest.

Working with soil, seeds, plants and each other builds a sense of well-being, advances social skills, stimulates creativity and thought processes, and reduces stress. There are so many benefits to getting your hands in the dirt and growing and sharing your own food and flowers!



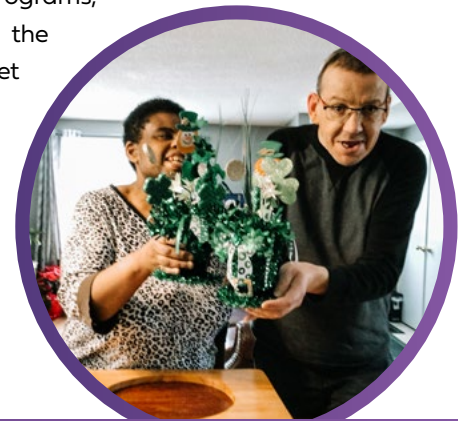


VIRTUAL PROGRAM THRIVING

First created and launched more than a year ago when Ontario went into its first pandemic lockdown, the Virtual Program was intended to provide alternative programming when the pandemic made traditional programs impossible. These many, many months later, we are happy to report to you that the Virtual Program schedule remains robust and well-attended by individuals supported by CLH.

Highlights include Science Wednesdays, Book Club, Wellness Workshops (and Vision Boards!), "Cooking Around the World", and an original CLH-produced virtual/live theatre production. CLH is now creating collaborative programs to include individuals from other developmental services organizations across Central

Ontario. A noteworthy partnership with Georgian College's DSW (Developmental Services Worker) program in the winter term led to a full suite of new programs which gave DSW students opportunities to create and lead virtual programs, and CLH individuals the benefit of getting to meet a whole new group of young leaders. It was a tremendous success for everyone. Your support makes these initiatives possible!



WAYS TO GIVE

MONTHLY DONOR SPOTLIGHT: LINDSAY REID



"I came to know CLH Foundation through my work in the charitable sector, and was really struck by the team at CLH Developmental Support Services and how much they care about their work. They speak about their work and the individuals they support with so much respect, passion, empathy and genuine concern – so much that they made me care, and I decided I'd help them out a wee bit. I prefer to give monthly (to a few places...) because it's so convenient and I don't have to think about it too much. And when it's spread out over the year, it's easier to be a bit more generous."

Thank you, Lindsay!

If you would like to become a monthly donor and join Lindsay in supporting CLH all year round, simply go to www.clhmidland.on.ca/donate. There you can choose the amount, select "recurring donation" and click on "monthly" – you'll find the form easy to follow. Every gift makes a wonderful difference!



WHAT'S IN A NAME

A Name and a History to Be Proud Of How CLH Developmental Support Services came to be

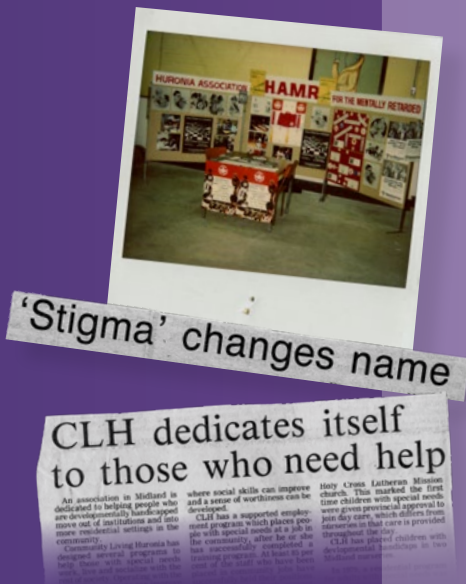
We can hardly believe it has been three years since CLH Developmental Support Services and CLH Foundation undertook the strategic planning that would identify the core priorities of the organization.

The strategic plan *Leading the Way: 2019-2021* identified the need to revitalize the brand identity and imaging of both CLH and CLH Foundation. The decision was made to

keep "CLH" in tribute to the indelible legacy of Community Living Huronia, but modernized to acknowledge the evolution of the organization, programming, and developmental services sector. From that forward thinking, CLH Developmental Support Services was born. While CLH may no longer stand for "Community Living Huronia", CLH will continue to stand for the innovation and excellence for which it has always been known.

DID YOU KNOW?

- Organized by Evelyn Banks, parents in our community began to advocate for educational opportunities for their children in the public-school system in 1960. In September of that year, the first eight local children attended segregated classes at Regent Public School. The "Huronia Association" grew out of this movement, which was known over time by several different names.
- In the Spring of 1966, the organization was incorporated as Huronia Society for the Mentally Retarded. In 1977, the Huronia Society for the Mentally Retarded changed its name to Huronia Association for the Mentally Retarded (H.A.M.R.).
- In 1981, a new name was adopted – the Central Administration for Community Living Huronia (CLH).
- In 2019, CLH Developmental Support Services legally changed its name.
- CLH is no longer used as an acronym, but is a name of its own. For a comparison, think of 3M (Fun fact: 3M was officially known as the Minnesota Mining and Manufacturing Company until 2002, when the name was legally changed to 3M).





Follow Us @CLHFoundation.ca



CLHMIDLAND.ON.CA

Connected is a twice yearly publication of CLH Foundation. Editor: Sue-Ellen Boyes Design: Collaborative Haus
Front cover: Pictured in the wonderful front gardens they created and proudly care for are (L to R): Todd Garrett,
Neil Thiessen, Greg Black, John St. Jules, Adam Thompson. Porch (L to R): Direct Support professionals
Denise Sears, Amanda McKinnon, Vicky McGuire, Chrissy Bragan. Thank you for sharing!